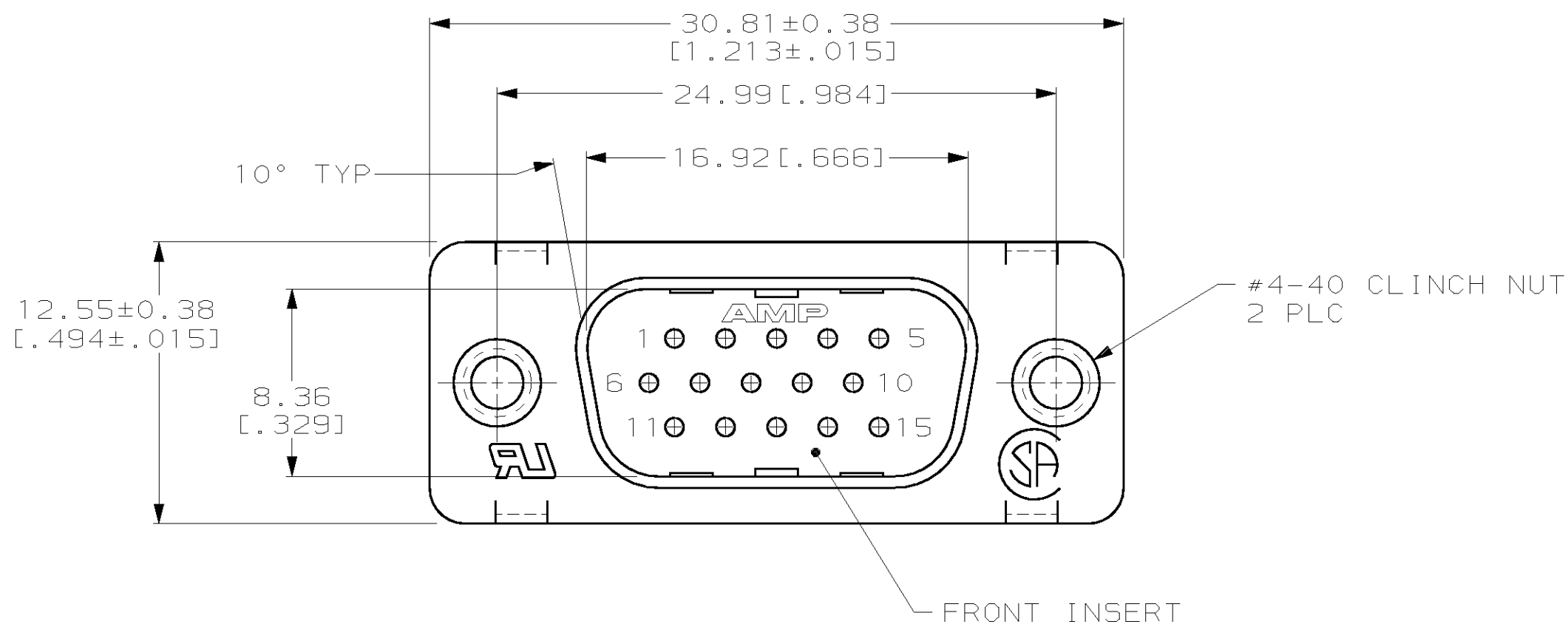
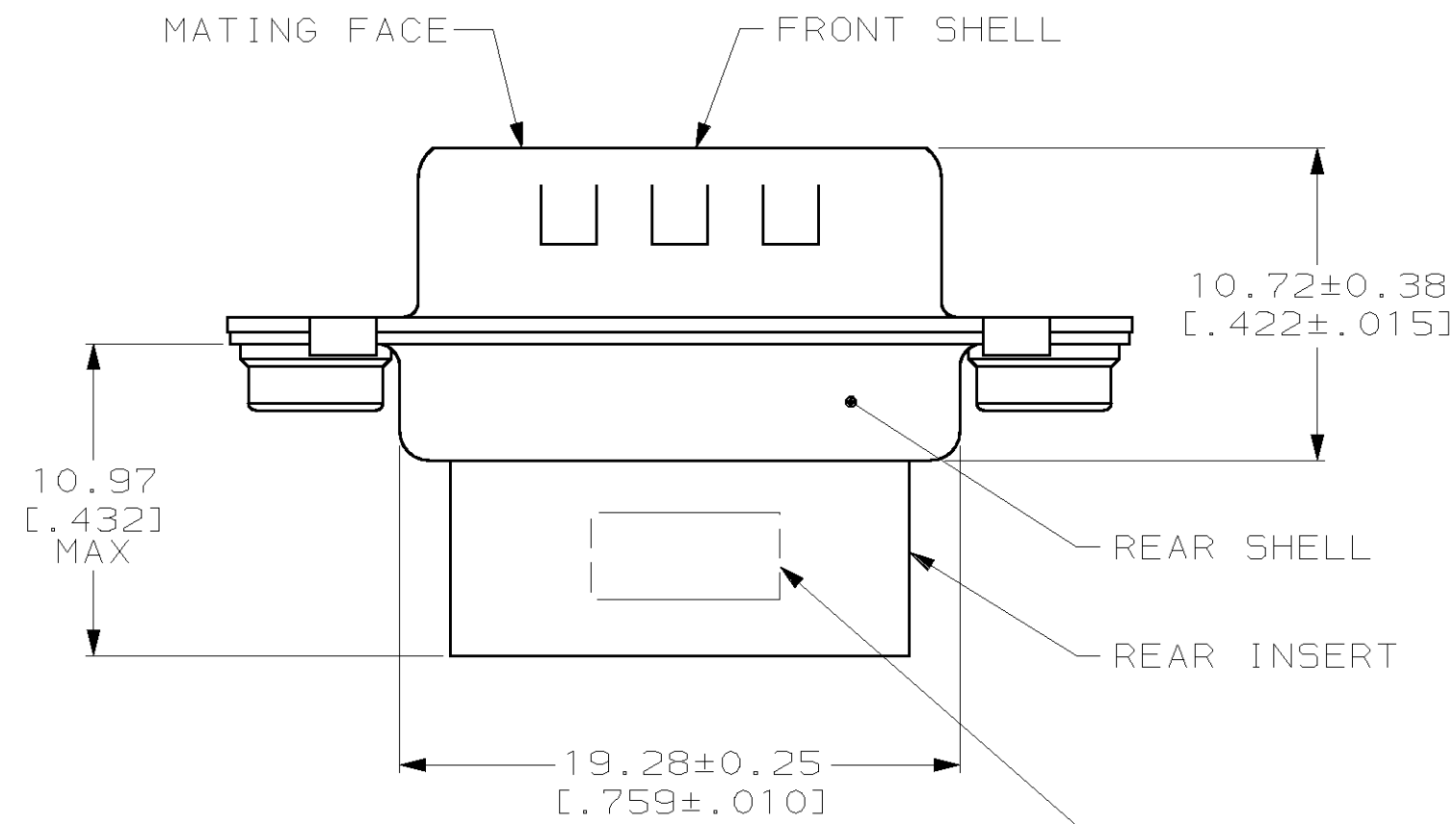


THIS DRAWING IS UNPUBLISHED. RELEASED FOR PUBLICATION  
 BY AMP INCORPORATED, ALL RIGHTS RESERVED.

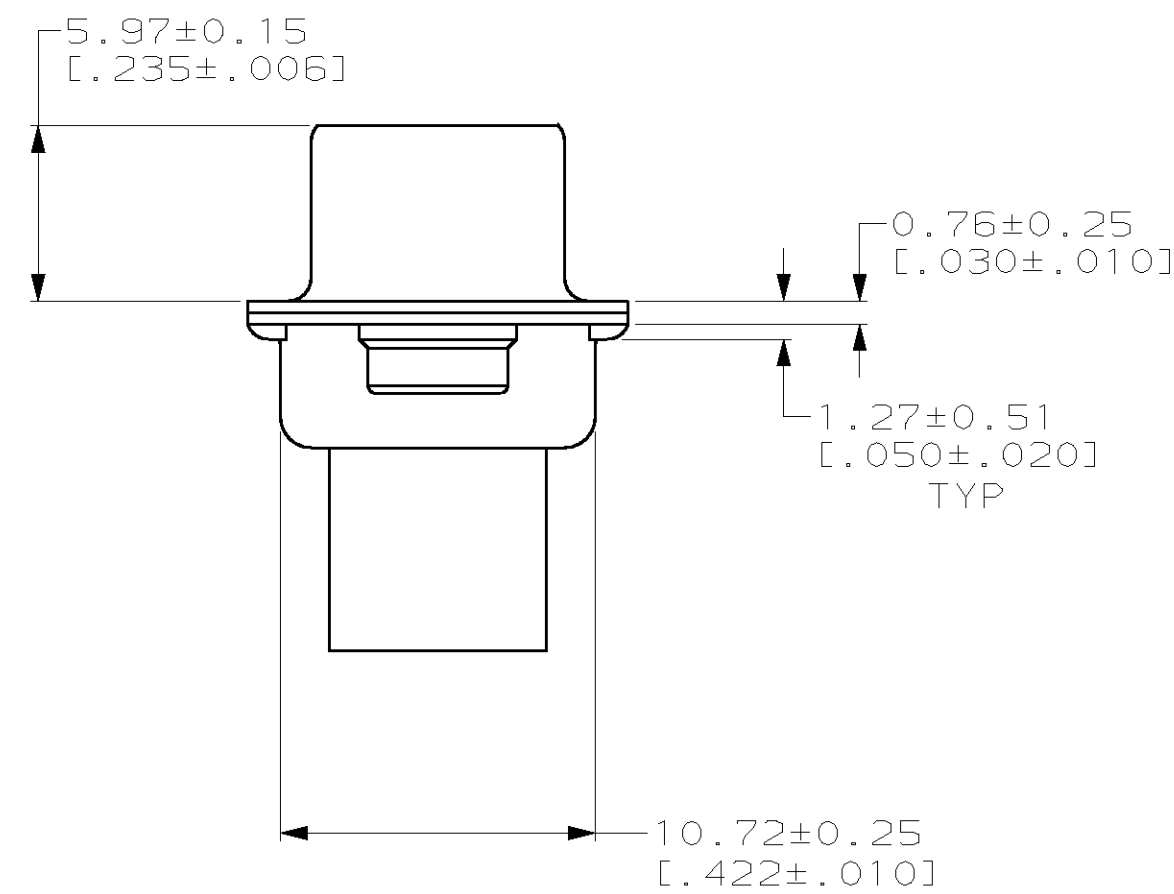
LOC	DIST	REVISIONS			
P	LTR	DESCRIPTION	DATE	DWN	APVD
GP	00	0	RELEASED PER EC 0513-0209-03	02JAN04	LB 5B



- CONNECTOR ACCEPTS 22 DF PIN CONTACTS, RETENTION TINES ARE AN INTEGRAL PART OF INSERT.
- CLINCH NUT & SHELLS: CARBON STEEL.  
INSERTS: NYLON, BLACK, UL 94V-0 RATED.
- SHELLS: 5.08µm [.000200] MIN TIN OVER 2.54µm [.000100] MIN COPPER UNDERPLATE.  
CLINCH NUT: CLEAR CHROMATE OVER ZINC PLATE.



TYCO, PART NUMBER AND DATE CODE MARKED IN AREA INDICATED, ON FAR SIDE



1658691-1  
 PART NUMBER

THIS DRAWING IS A CONTROLLED DOCUMENT.		DWN L. BAUM 02JAN04	AMP Incorporated Harrisburg, PA 17105-3608	
DIMENSIONS: mm [INCH]		CHK S. BOLASH 02JAN04	AMP	
TOLERANCES UNLESS OTHERWISE SPECIFIED:		APVD M. WALMSLEY 02JAN04	NAME PLUG ASSEMBLY, SIZE 1, 15 POSITION, CLINCH NUTS, HDP-22 AMPLIMIT™	
0 PLC ±-	1 PLC ±-	PRODUCT SPEC 108-1268	SIZE A2	CAGE CODE 00779
2 PLC ±0.13 [.005]	3 PLC ±-	APPLICATION SPEC 114-10001	DRAWING NO C-1658691	RESTRICTED TO -
4 PLC ±-	ANGLES ±2°	WEIGHT -	SCALE 4:1	SHEET 1 OF 1
MATERIAL △	FINISH △	CUSTOMER DRAWING		REV 0